

*'Be strong and courageous. Do not be afraid; do not be discouraged for the Lord your God will be with you wherever you go.'*



## Heytesbury C E Primary School Newsletter

15 May 2020



Dear Parents,

It has certainly been a very demanding week following the Prime Minister's announcements on Sunday evening. We are working very hard at trying to implement the Government's expectations whilst putting policies, procedures and resources into place to ensure your children and our staff are safe as schools begin to re-open after half term. I will endeavour to let you know of these plans and procedures next week.

Throughout the lockdown, teachers have been emailing and telephoning parents and children to check how you are or to help with learning. It is always great to have a chat with the children – we do miss them.

Congratulations to Joshua Campbell-Park who was a winner in the lego building challenge run by Kingdown School. Next week's theme is fairgrounds – more details have been / will be emailed with the planning for next week.

Have a fantastic week-end.

Mrs Godfrey & Team

### Our school mission statement: **"Working together so all may flourish"**

Even though we are not physically in school, we are still driven by our mission statement. From telephone calls, to emails, to virtual meetings, to chance meetings at 2m, to chats over garden fences whilst children jump on their trampoline, the school community continues to look after one another – thank you.

We should also remember our school's key Biblical quotation which is particularly relevant just now. *"Be strong and courageous. Do not be afraid; do not be discouraged, for the LORD your God will be with you wherever you go."* Joshua 9 v1

### **Maths Passports** (tested via telephone)

Congratulations to:

Barney: Africa, Madagascar & Africa, Kenya  
Freddie: Africa Madagascar & Africa, Kenya



ROSANNA  
ASHTON

"Working together so all may flourish"

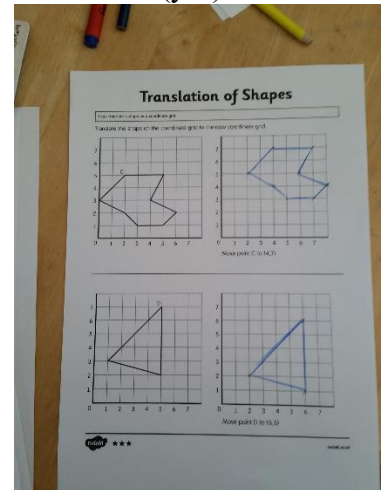
Katie's little helper.....



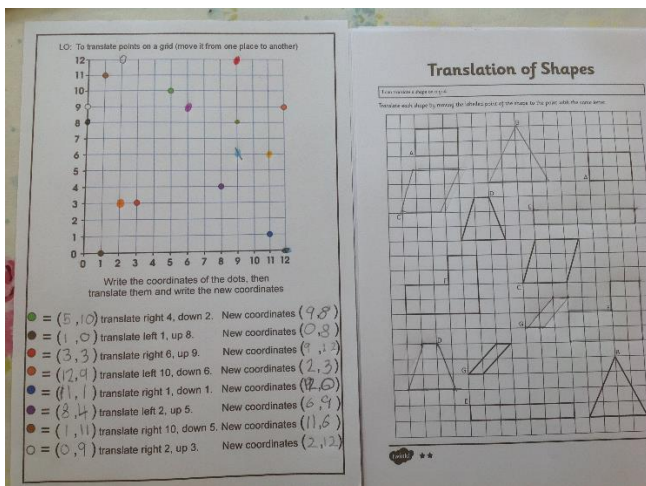
The finished work of art



Charlie's (yr4) maths



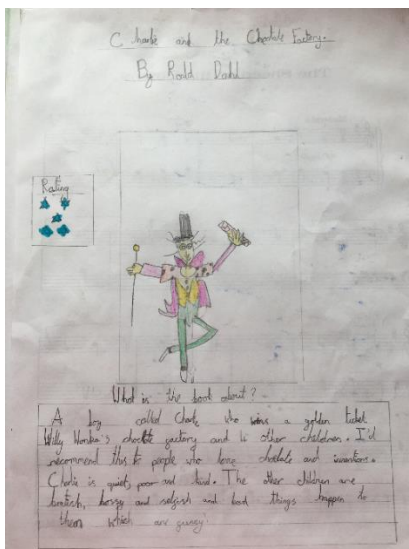
Rosanna's translation work



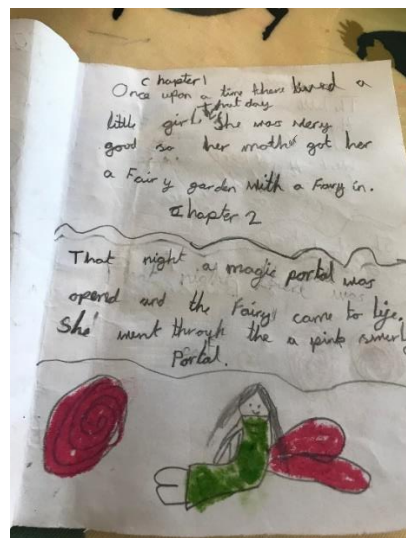
Archie's periscope



Charlie K's book review



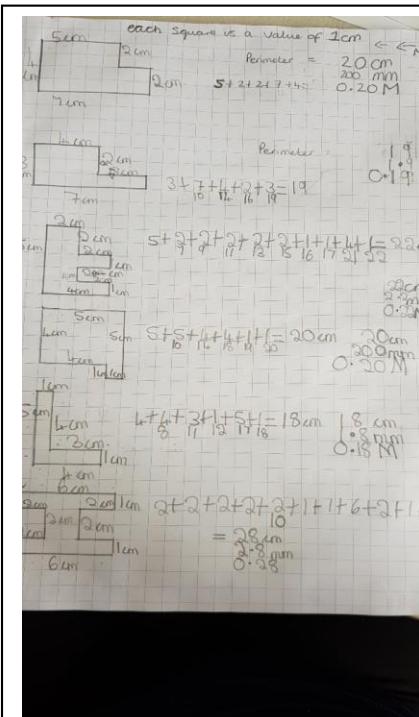
India's story



### Millie and Sam's art work in the style of Lynn Flavell



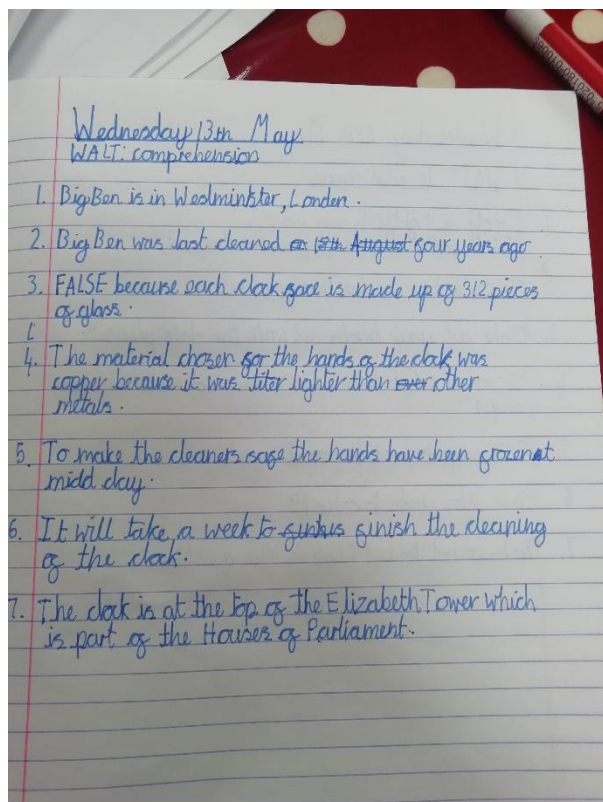
## Some of Talia's work



1. Big Ben is the name of the clock face which is in London which is ~~near~~ Elizabeth Tower.
2. Big Ben was last damaged 19 years ago.
3. 32 pieces were used.
4. Big Ben's hands are made of copper because it is lighter than other metals.
5. The hands are sage because the hands were given in Sunday position.
6. It takes a week for cleaning.
7. The correct name is called the Elizabeth Tower.

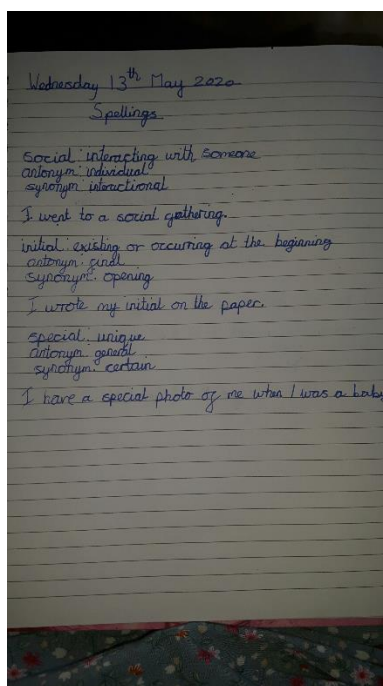
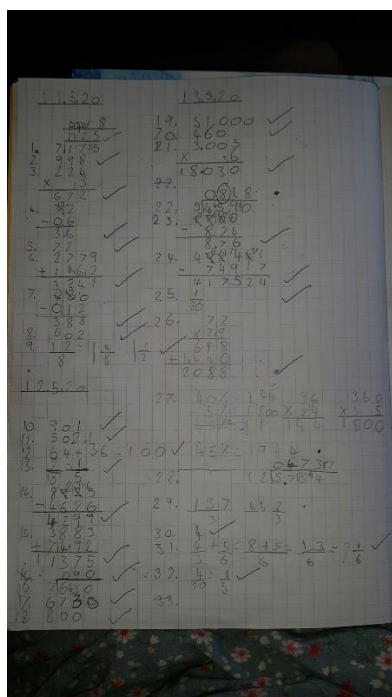


## Katee's comprehension

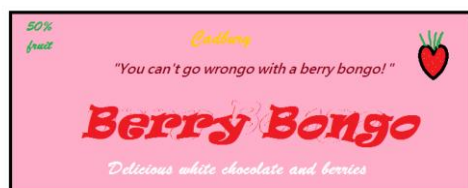
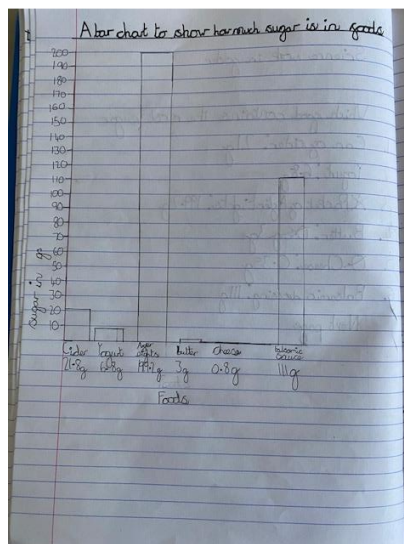
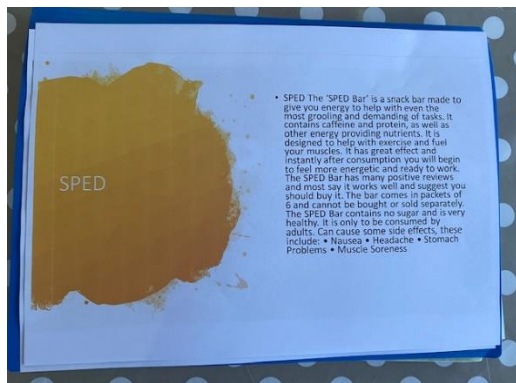


## Williams' Fruit survey

## Daisy has been working hard



## Archie's snack bar and bar graph



## Some of Poppy's work



## Peas!!

Peas are incredibly special to us in England and we need them for nutrition. The peas earliest archaeological finds date from late Neolithic era of current Greece, Syria, Turkey and Jordan. The wild pea is restricted to the Mediterranean basin and the near east. Peas travel 5,979 miles from south Africa to us, here in England. To reduce how many miles they travel, we can cook fresh, seasonal food, we can buy locally grown food from farmers markets and we can grow our own.

